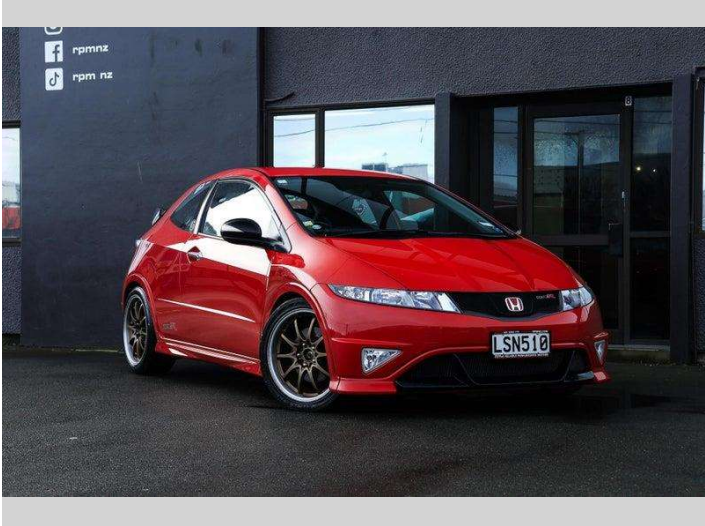


2009 Honda Civic | FN2 Type R - 6SP K20A VTEC!



Purchase Price

\$16,995

Includes GST, Registration & Licensing

Finance may be available on this vehicle. Ask one of our friendly staff for more information.



Gain peace of mind with Mechanical Breakdown Insurance. **Ask us how.**



Top features

None Listed

Body Style

Coupe

Odometer

136,000 km

Engine

1990 cc

Fuel Type

Petrol

Transmission

5-Speed Manual

Wheels

-

VIN

-

Interior

-

Safety



Based on 2024 UCSR rating for 06-11 models

Reg No.

LSN510

Ext Colour

Red

History

-

Seats

-

CO2 Emissions

★ ★ ☆ ☆ ☆ ☆

241 grams/km

Energy Economy

★ ☆ ☆ ☆ ☆ ☆

Annual fuel cost of \$3,920
10L per 100km

Cost per year is an estimate based on petrol price of \$2.80 per litre and an average distance of 14000 km. Emissions and Energy Economy figures standardised to 3P WLTP.

Stock ID: 3007099



RPM - Christchurch | Phone 027 552 2776 | Email christchurch@rpmnz.com
59 Falsgrave Street, Waltham, Christchurch 8011
www.rpmnz.com