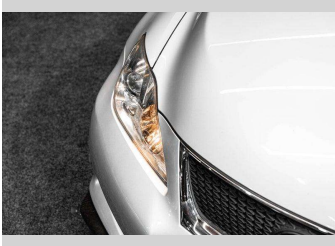


2008 Lexus IS F 5.0L V8 410+HP - Performance +



Purchase Price

Includes GST, Registration & Licensing

\$31,995

Finance may be available on this vehicle. Ask one of our friendly staff for more information.



Gain peace of mind with Mechanical Breakdown Insurance. **Ask us how.**



Top features

None Listed

Body Style

Sedan

Odometer

127,000 km

Engine

4960 cc

Fuel Type

Petrol

Transmission

Tiptronic

Wheels

-

VIN

7AT0B00TX22003388

Interior

-

Safety



Based on 2024 UCSR rating for 05-13 models

Reg No.

PAS322

Ext Colour

Silver

History

-

Seats

-

CO2 Emissions

☆☆☆☆☆☆

314 grams/km

Energy Economy

☆☆☆☆☆☆

**Annual fuel cost of \$5,140
13.1L per 100km**

Cost per year is an estimate based on petrol price of \$2.80 per litre and an average distance of 14000 km. Emissions and Energy Economy figures standardised to 3P WLTP.

Stock ID: 7253



RPM - Auckland | Phone 021 2254 776 | Email sales@rpmnz.com
16 Heremai Street, Henderson, Auckland 0612, New Zealand
www.rpmnz.com