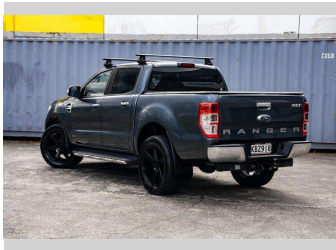


2016 Ford Ranger XLT | 3.2 Turbo Double Cab!



Purchase Price

Includes GST, Registration & Licensing

\$28,995

Finance may be available on this vehicle. Ask one of our friendly staff for more information.



Gain peace of mind with Mechanical Breakdown Insurance. **Ask us how.**



Top features

None Listed

Body Style

Ute

Odometer

125,000 km

Engine

3198 cc

Fuel Type

Diesel

Transmission

Auto

Wheels

-

VIN

MNAUMFF50GW587798

Interior

-

Safety



Based on 2025 VSRR rating

Reg No.

KBZ918

Ext Colour

Grey

History

-

Seats

-

CO2 Emissions

★★★★☆☆

257 grams/km

Energy Economy

★★★★☆☆

Annual fuel cost of \$3,780
9.7L per 100km

Cost per year is an estimate based on diesel price of \$2.00 per litre and an average distance of 14000 km. Includes Road User Charges (RUC). Emissions and Energy Economy figures standardised to 3P WLTP.

Stock ID: 8050



RPM - Auckland | Phone 021 2254 776 | Email sales@rpmnz.com
16 Heremai Street, Henderson, Auckland 0612, New Zealand
www.rpmnz.com