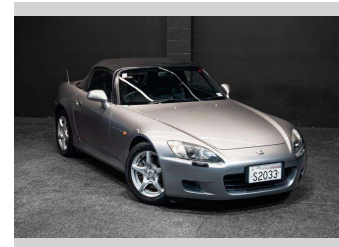
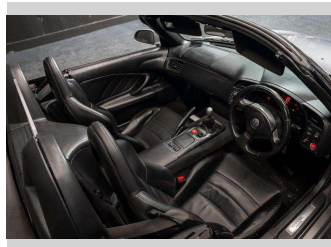
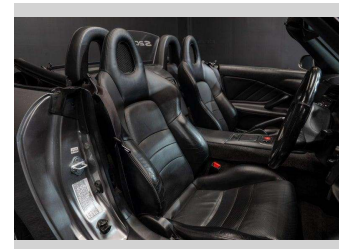
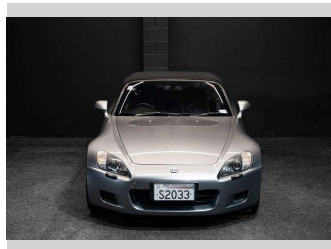
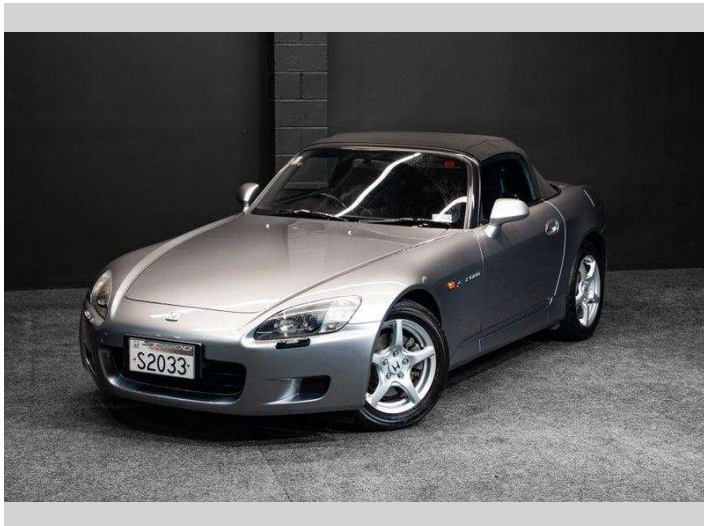


# 1999 Honda S2000 AP1 - VTEC RWD!



**Purchase Price** **\$39,995**  
Includes GST, Registration & Licensing

Finance may be available on this vehicle. Ask one of our friendly staff for more information.



Gain peace of mind with Mechanical Breakdown Insurance. **Ask us how.**



**Top features**

None Listed

Body Style  
**Convertible**

Odometer  
**128,000 km**

Engine  
**1997 cc, Internal Combustion**


Fuel Type  
**Petrol**

Transmission  
**5-Speed Manual**

Wheels  
-

VIN  
**JHMAP1130YT001631**

Interior  
-

Safety  
  
Based on 2025 VSRR rating

Reg No.  
**S2033**

Ext Colour  
**Silver**

History  
-

Seats  
-

CO2 Emissions  
**★☆☆☆☆**  
**267 grams/km**

Energy Economy  
**★☆☆☆☆**  
**Annual fuel cost of \$4,350**  
**11.1L per 100km**

Cost per year is an estimate based on petrol price of \$2.80 per litre and an average distance of 14000 km. Emissions and Energy Economy figures standardised to 3P WLTP.

**Stock ID: 8856**