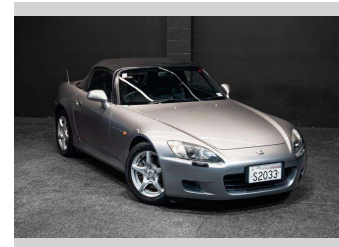
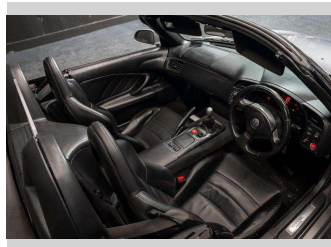
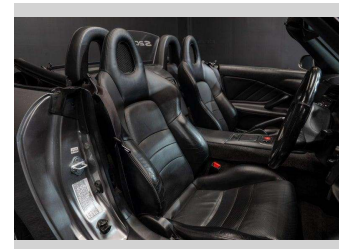
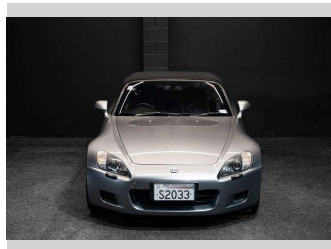
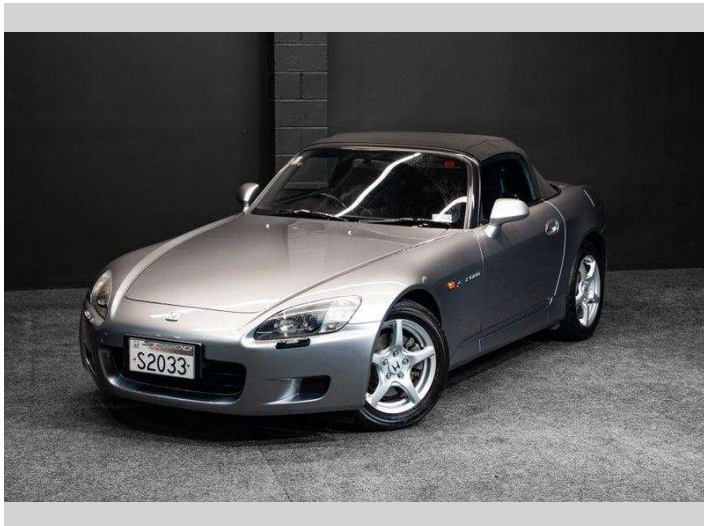


1999 Honda S2000 AP1 - VTEC RWD!



Purchase Price **\$39,995**
Includes GST, Registration & Licensing

Finance may be available on this vehicle. Ask one of our friendly staff for more information.



Gain peace of mind with Mechanical Breakdown Insurance. **Ask us how.**



Top features

None Listed

Body Style
Convertible

Odometer
128,000 km

Engine
1997 cc, Internal Combustion


Fuel Type
Petrol

Transmission
5-Speed Manual

Wheels
-

VIN
JHMAP1130YT001631

Interior
-

Safety

Based on 2025 VSRR rating

Reg No.
S2033

Ext Colour
Silver

History
-

Seats
-

CO2 Emissions
★☆☆☆☆
267 grams/km

Energy Economy
★☆☆☆☆
Annual fuel cost of \$4,350
11.1L per 100km

Cost per year is an estimate based on petrol price of \$2.80 per litre and an average distance of 14000 km. Emissions and Energy Economy figures standardised to 3P WLTP.

Stock ID: 8856