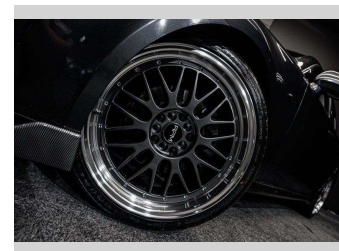
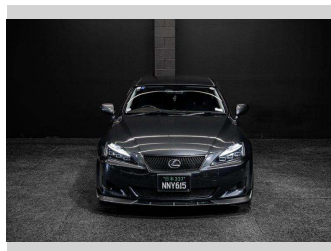
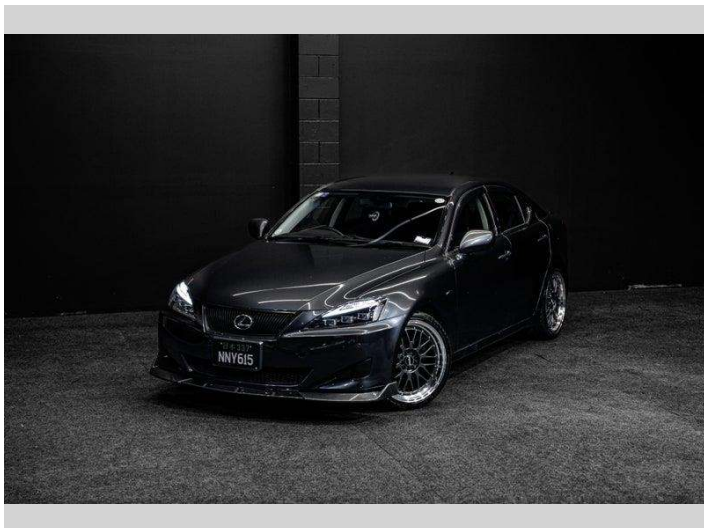


2008 Lexus IS 250 2.5L V6 w/ Paddle Shift - Low Ks



Purchase Price **\$15,995**
Includes GST, Registration & Licensing

Finance may be available on this vehicle. Ask one of our friendly staff for more information.



Gain peace of mind with Mechanical Breakdown Insurance. **Ask us how.**



Top features

None Listed

Body Style
Sedan

Odometer
84,000 km

Engine
2499 cc, Internal Combustion


Fuel Type
Petrol

Transmission
Auto

Wheels
-

VIN
7AT0B00EX21071884

Interior
-

Safety

Based on 2025 UCSR rating for 05-13 models

Reg No.
NNY615

Ext Colour
Grey

History
-

Seats
-

CO2 Emissions
★ ★ ★ ☆ ☆ ☆
231 grams/km

Energy Economy
★ ☆ ☆ ☆ ☆ ☆
Annual fuel cost of \$3,760
9.6L per 100km

Cost per year is an estimate based on petrol price of \$2.80 per litre and an average distance of 14000 km. Emissions and Energy Economy figures standardised to 3P WLTP.

Stock ID: 8862