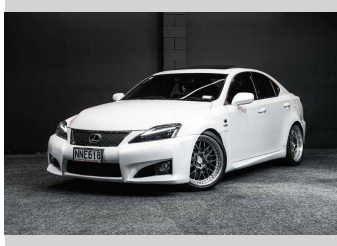


# 2008 Lexus IS F 5.0L V8 410+HP - Performance +



## Purchase Price

Includes GST, Registration & Licensing

**\$31,995**

Finance may be available on this vehicle. Ask one of our friendly staff for more information.



Gain peace of mind with Mechanical Breakdown Insurance. **Ask us how.**



## Top features

None Listed

Body Style

**Sedan**

Odometer

**155,000 km**

Engine

**4960 cc**

Fuel Type

**Petrol**

Transmission

**Tiptronic**

Wheels

-

VIN

**7AT0B00TX21003289**

Interior

-

Safety



Based on 2024 UCSR rating for 05-13 models

Reg No.

**NNE618**

Ext Colour

**White**

History

-

Seats

-

CO2 Emissions

☆☆☆☆☆☆

**314 grams/km**

Energy Economy

☆☆☆☆☆☆

**Annual fuel cost of \$5,140**

**13.1L per 100km**

Cost per year is an estimate based on petrol price of \$2.80 per litre and an average distance of 14000 km. Emissions and Energy Economy figures standardised to 3P WLTP.

**Stock ID: 7736**



RPM - Auckland | Phone 021 2254 776 | Email [sales@rpmnz.com](mailto:sales@rpmnz.com)  
16 Heremai Street, Henderson, Auckland 0612, New Zealand  
[www.rpmnz.com](http://www.rpmnz.com)