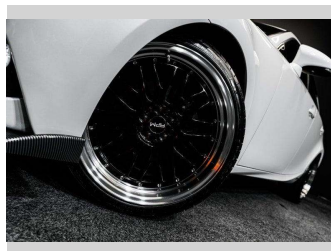


2013 Lexus IS300H Fresh Import + New Wheels



Purchase Price **\$22,995**
Includes GST, Registration & Licensing

Finance may be available on this vehicle. Ask one of our friendly staff for more information.



Gain peace of mind with Mechanical Breakdown Insurance. **Ask us how.**



Top features

None Listed

Body Style
Sedan

Odometer
109,000 km

Engine
2500 cc

Fuel Type
Petrol

Transmission
Auto

Wheels
-

VIN
7AT0B013x26011895

Interior
-

Safety



Based on 2025 VSRR rating

Reg No.

-

Ext Colour
White

History

-

Seats

-

CO2 Emissions

★★★★★☆☆

122 grams/km

Energy Economy

★★★★☆☆☆☆

Annual fuel cost of \$2,040
5.2L per 100km

Cost per year is an estimate based on petrol price of \$2.80 per litre and an average distance of 14000 km. Emissions and Energy Economy figures standardised to 3P WLTP.

Stock ID: 9061