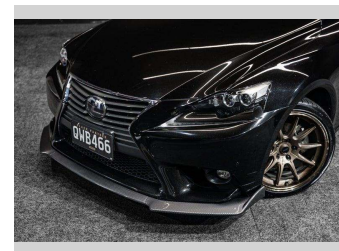
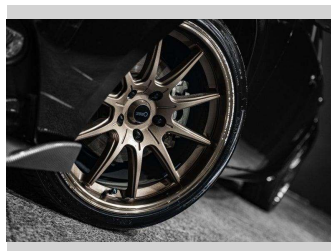


# 2015 Lexus IS 300h | Stunning Hybrid



**Purchase Price** **\$24,995**  
Includes GST, Registration & Licensing

Finance may be available on this vehicle. Ask one of our friendly staff for more information.



Gain peace of mind with Mechanical Breakdown Insurance. **Ask us how.**



**Top features**

None Listed

Body Style  
**Sedan**

Odometer  
**105,898 km**

Engine  
**2493 cc, Hybrid**

Fuel Type  
**Electric**


Transmission  
**Auto**

Wheels  
-

VIN  
**7AT0B013X24047771**

Interior  
-

Safety



Based on 2025 VSRR rating

Reg No.  
**QWB466**

Ext Colour  
**Black**

History  
-

Seats  
-

CO2 Emissions  
**★★★★☆**  
**122 grams/km**

Energy Economy  
**★★★★☆☆**  
**Annual fuel cost of \$2,040**  
**5.2L per 100km**

Cost per year is an estimate based on petrol price of \$2.80 per litre and an average distance of 14000 km. Emissions and Energy Economy figures standardised to 3P WLTP.

**Stock ID: 9464**