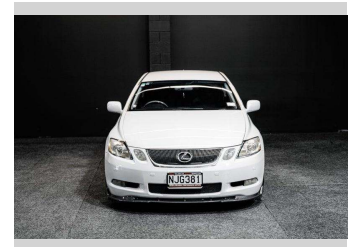
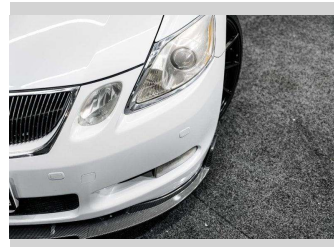
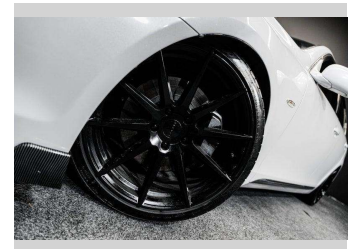
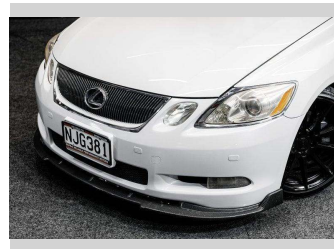
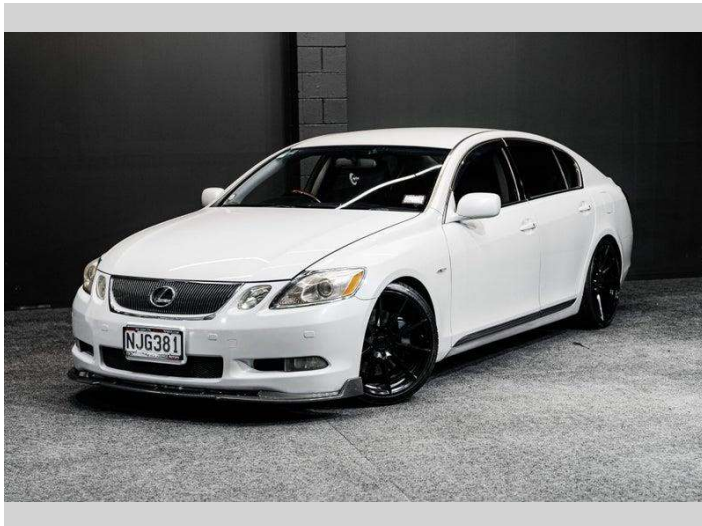



# 2005 Lexus GS 430 4.3L V8 279BHP + Aftermarket




**Purchase Price** **\$15,995**  
Includes GST, Registration & Licensing

Finance may be available on this vehicle. Ask one of our friendly staff for more information.



Gain peace of mind with Mechanical Breakdown Insurance. **Ask us how.**



**Top features**  
None Listed

Body Style  
**Sedan**

Odometer  
**157,000 km**

Engine  
**4290 cc, Internal Combustion**


Fuel Type  
**Petrol**

Transmission  
**Auto**

Wheels  
-

VIN  
**7AT0B00DX20009785**

Interior  
-

Safety  
  
Based on 2025 VSRR rating

Reg No.  
**NJG381**

Ext Colour  
**White**

History  
-

Seats  
-

CO2 Emissions  
**★☆☆☆☆**  
**287 grams/km**

Energy Economy  
**★☆☆☆☆**  
**Annual fuel cost of \$4,660**  
**11.9L per 100km**

Cost per year is an estimate based on petrol price of \$2.80 per litre and an average distance of 14000 km. Emissions and Energy Economy figures standardised to 3P WLTP.

**Stock ID: 9266**