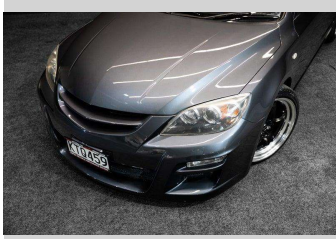


# 2006 Mazda Axela MAZDASPEED GEN 1!



Purchase Price

Includes GST, Registration & Licensing

\$19,995

Finance may be available on this vehicle. Ask one of our friendly staff for more information.



Gain peace of mind with Mechanical Breakdown Insurance. **Ask us how.**



Top features

None Listed

Body Style

Hatchback

Odometer

135,000 km

Engine

2260 cc

Fuel Type

Petrol

Transmission

5-Speed Manual

Wheels

-

VIN

7AT0C13JX17300471

Interior

-

Safety



Based on 2025 UCSR rating for 03-09 models

Reg No.

Ktq459

Ext Colour

Grey

History

-

Seats

-

CO2 Emissions

★ ★ ☆ ☆ ☆ ☆

240 grams/km

Energy Economy

★ ☆ ☆ ☆ ☆ ☆

Annual fuel cost of \$3,920  
10L per 100km

Cost per year is an estimate based on petrol price of \$2.80 per litre and an average distance of 14000 km. Emissions and Energy Economy figures standardised to 3P WLTP.

Stock ID: 8142



RPM - Auckland | Phone 021 2254 776 | Email sales@rpmnz.com  
16 Heremai Street, Henderson, Auckland 0612, New Zealand  
www.rpmnz.com