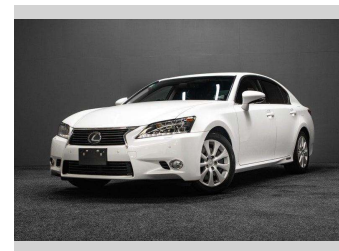
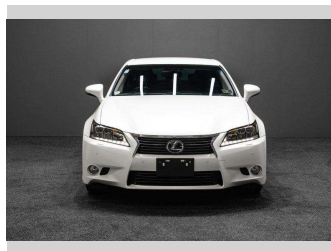
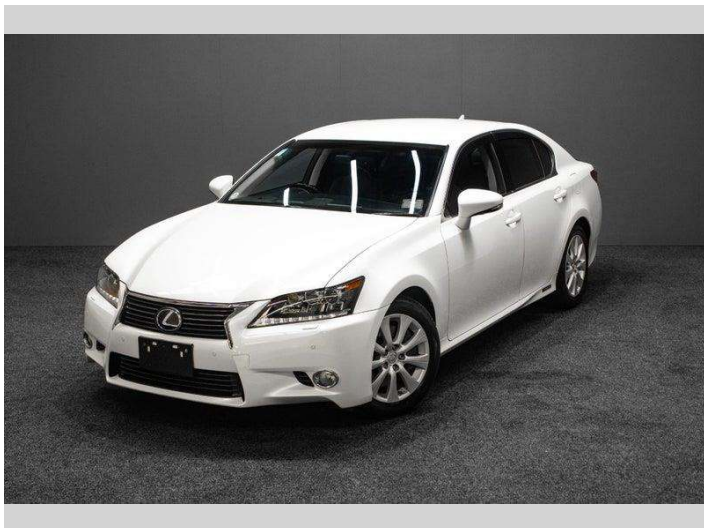


# 2012 Lexus GS 450h Hybrid 338BHP - Version L



Purchase Price

**\$19,995**

Includes GST, Registration & Licensing

Finance may be available on this vehicle. Ask one of our friendly staff for more information.



Gain peace of mind with Mechanical Breakdown Insurance. **Ask us how.**



## Top features

None Listed

Body Style

**Sedan**

Odometer

**139,000 km**

Engine

**3456 cc, Hybrid**

Fuel Type

**Electric**

Transmission

**Auto**

Wheels

-

VIN

**7AT0B00GX26002920**

Interior

-

Safety



Based on 2025 VSRR rating

Reg No.

-

Ext Colour

**White**

History

-

Seats

-

CO2 Emissions

★★★★★☆☆

**149 grams/km**

Energy Economy

★★★★☆☆☆☆

**Annual fuel cost of \$2,510**

**6.4L per 100km**

Cost per year is an estimate based on petrol price of \$2.80 per litre and an average distance of 14000 km. Emissions and Energy Economy figures standardised to 3P WLTP.

**Stock ID: 3008417**



RPM - Christchurch | Phone 027 552 2776 | Email christchurch@rpmnz.com  
59 Falsgrave Street, Waltham, Christchurch 8011  
www.rpmnz.com