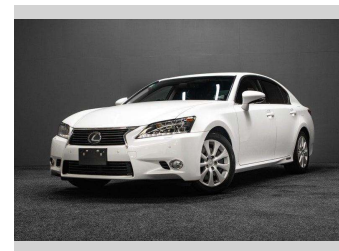
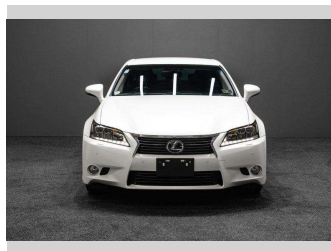
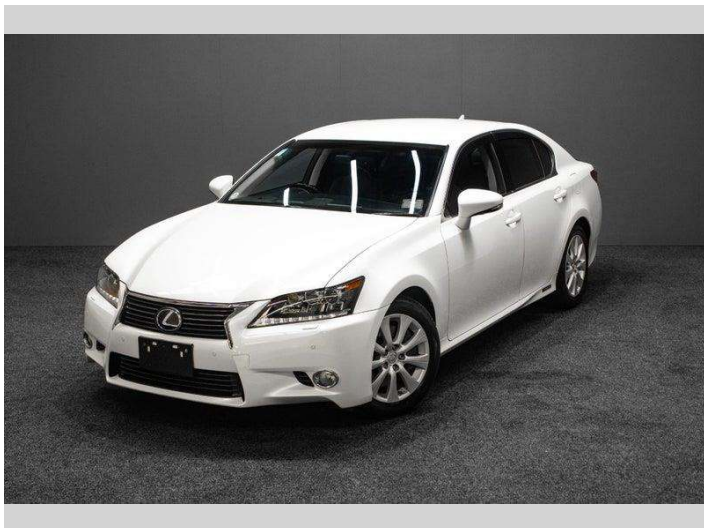


# 2012 Lexus GS 450h Hybrid 338BHP - Version L



**Purchase Price** **\$19,995**  
Includes GST, Registration & Licensing

Finance may be available on this vehicle. Ask one of our friendly staff for more information.



Gain peace of mind with Mechanical Breakdown Insurance. **Ask us how.**



**Top features**  
None Listed

Body Style  
**Sedan**

Odometer  
**139,000 km**

Engine  
**3456 cc, Hybrid**


Fuel Type  
**Electric**

Transmission  
**Auto**

Wheels  
-

VIN  
**7AT0B00GX26002920**

Interior  
-

Safety  
  
Based on 2025 VSRR rating

Reg No.  
-

Ext Colour  
**White**

History  
-

Seats  
-

CO2 Emissions  
**★★★★☆**  
**149 grams/km**

Energy Economy  
**★★★★☆☆**  
**Annual fuel cost of \$2,510**  
**6.4L per 100km**

Cost per year is an estimate based on petrol price of \$2.80 per litre and an average distance of 14000 km. Emissions and Energy Economy figures standardised to 3P WLTP.

**Stock ID: 3008417**