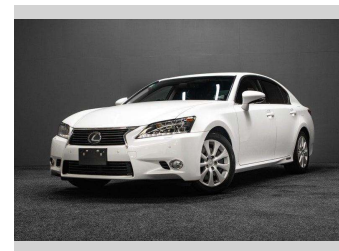
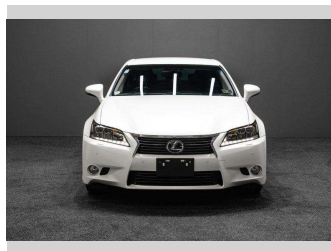
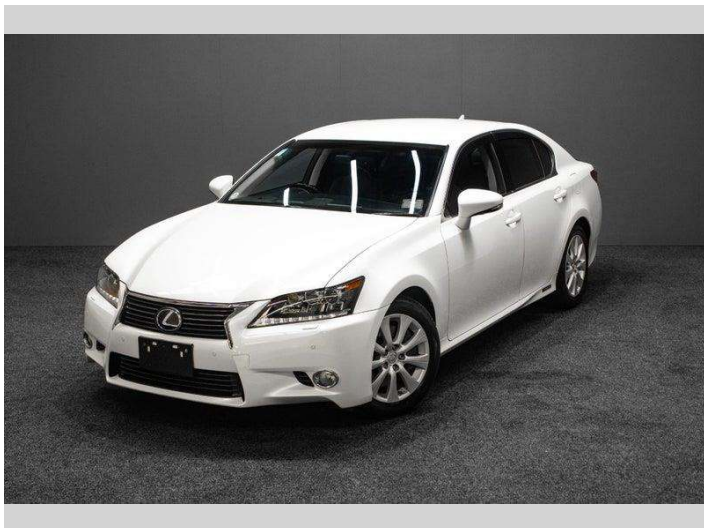


2012 Lexus GS 450h Hybrid 338BHP - Version L



Purchase Price **\$19,995**
Includes GST, Registration & Licensing

Finance may be available on this vehicle. Ask one of our friendly staff for more information.



Gain peace of mind with Mechanical Breakdown Insurance. **Ask us how.**



Top features
None Listed

Body Style
Sedan

Odometer
139,000 km

Engine
3456 cc, Hybrid


Fuel Type
Electric

Transmission
Auto

Wheels
-

VIN
7AT0B00GX26002920

Interior
-

Safety

Based on 2025 VSRR rating

Reg No.
-

Ext Colour
White

History
-

Seats
-

CO2 Emissions
★★★★☆
149 grams/km

Energy Economy
★★★★☆☆
Annual fuel cost of \$2,510
6.4L per 100km

Cost per year is an estimate based on petrol price of \$2.80 per litre and an average distance of 14000 km. Emissions and Energy Economy figures standardised to 3P WLTP.

Stock ID: 3008417