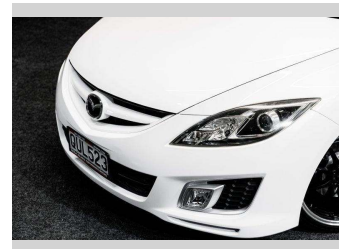
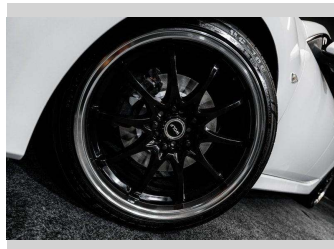
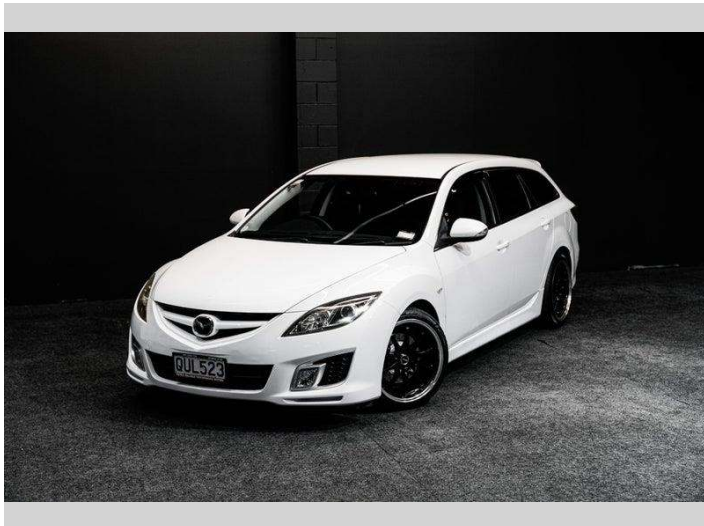


# 2009 Mazda Atenza 25s | Aftermarket 18 Wheels



**Purchase Price** **\$14,995**  
Includes GST, Registration & Licensing

Finance may be available on this vehicle. Ask one of our friendly staff for more information.



Gain peace of mind with Mechanical Breakdown Insurance. **Ask us how.**



**Top features**

None Listed

Body Style  
**Station Wagon**

Odometer  
**124,000 km**

Engine  
**2488 cc, Internal Combustion**

Fuel Type  
**Petrol**

Transmission  
**Auto**

Wheels  
-

VIN  
**7AT0C139X24106155**

Interior  
-

Safety



Based on 2025 UCSR rating for 08-11 models

Reg No.  
**QUL523**

Ext Colour  
**White**

History  
-

Seats  
-

CO2 Emissions  
**★ ★ ★ ☆ ☆ ☆**  
**229 grams/km**

Energy Economy  
**★ ☆ ☆ ☆ ☆ ☆**  
**Annual fuel cost of \$3,760**  
**9.6L per 100km**

Cost per year is an estimate based on petrol price of \$2.80 per litre and an average distance of 14000 km. Emissions and Energy Economy figures standardised to 3P WLTP.

**Stock ID: 8721**