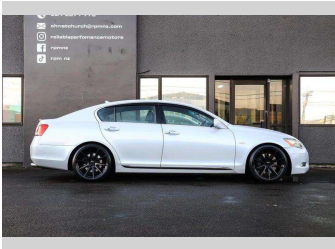


2005 Lexus GS 430 | 4.3L V8 - Cruiser!



Purchase Price

Includes GST, Registration & Licensing

\$14,995

Finance may be available on this vehicle. Ask one of our friendly staff for more information.



Gain peace of mind with Mechanical Breakdown Insurance. **Ask us how.**



Top features

None Listed

Body Style

Sedan

Odometer

152,000 km

Engine

4290 cc

Fuel Type

Petrol

Transmission

Auto

Wheels

-

VIN

-

Interior

-

Safety



Based on 2024 VSRR rating

Reg No.

njq381

Ext Colour

White

History

-

Seats

-

CO2 Emissions

★ ★ ☆ ☆ ☆ ☆

256 grams/km

Energy Economy

★ ★ ☆ ☆ ☆ ☆

**Annual fuel cost of \$3,780
9.7L per 100km**

Cost per year is an estimate based on diesel price of \$2.00 per litre and an average distance of 14000 km. Includes Road User Charges (RUC). Emissions and Energy Economy figures standardised to 3P WLTP.

Stock ID: 3007231



RPM - Christchurch | Phone 027 552 2776 | Email christchurch@rpmnz.com
59 Falsgrave Street, Waltham, Christchurch 8011
www.rpmnz.com