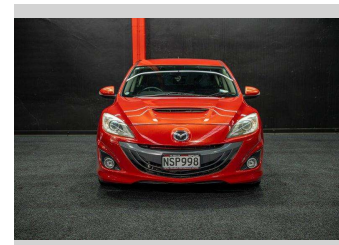
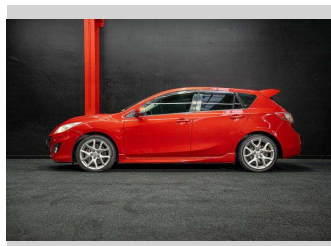


# 2011 Mazda Axela | MAZDASPEED GEN 2 - LOW



**Purchase Price** **\$18,995**  
Includes GST, Registration & Licensing

Finance may be available on this vehicle. Ask one of our friendly staff for more information.



Gain peace of mind with Mechanical Breakdown Insurance. **Ask us how.**



**Top features**  
None Listed

Body Style  
**Hatchback**

Odometer  
**118,000 km**

Engine  
**2260 cc, Internal Combustion**

Fuel Type  
**Petrol**

Transmission  
**5-Speed Manual**

Wheels  
-

VIN  
**7AT0C13JX21668378**

Interior  
-

Safety



Based on 2025 UCSR rating for 09-13 models

Reg No.  
**NSP998**

Ext Colour  
**Red**

History  
-

Seats  
-

CO2 Emissions  
★ ★ ☆ ☆ ☆ ☆  
**257 grams/km**

Energy Economy  
★ ☆ ☆ ☆ ☆ ☆

**Annual fuel cost of \$4,190**  
**10.7L per 100km**

Cost per year is an estimate based on petrol price of \$2.80 per litre and an average distance of 14000 km. Emissions and Energy Economy figures standardised to 3P WLTP.

**Stock ID: 3008626**