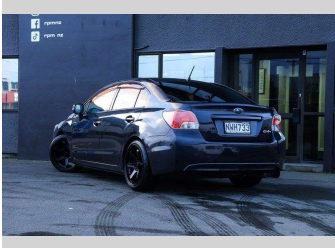
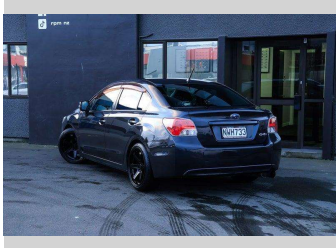
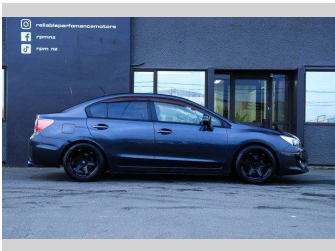
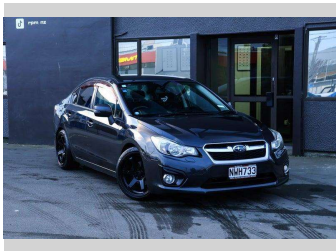


2012 Subaru Impreza | G4 - Perfect Daily!



Purchase Price

\$12,995

Includes GST, Registration & Licensing

Finance may be available on this vehicle. Ask one of our friendly staff for more information.



Gain peace of mind with Mechanical Breakdown Insurance. **Ask us how.**



Top features

None Listed

Body Style

Hatchback

Odometer

118,000 km

Engine

1990 cc

Fuel Type

Petrol

Transmission

Auto

Wheels

-

VIN

7AT0GF09X21003057

Interior

-

Safety



Based on 2024 UCSR rating for 12-16 models

Reg No.

NWH733

Ext Colour

Grey

History

-

Seats

-

CO2 Emissions

★★★★★☆☆

153 grams/km

Energy Economy

★★★★☆☆☆☆

**Annual fuel cost of \$2,590
6.6L per 100km**

Cost per year is an estimate based on petrol price of \$2.80 per litre and an average distance of 14000 km. Emissions and Energy Economy figures standardised to 3P WLTP.

Stock ID: 3007349



RPM - Christchurch | Phone 027 552 2776 | Email christchurch@rpmnz.com
59 Falsgrave Street, Waltham, Christchurch 8011
www.rpmnz.com