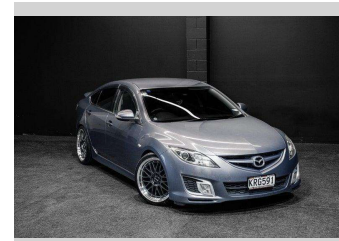
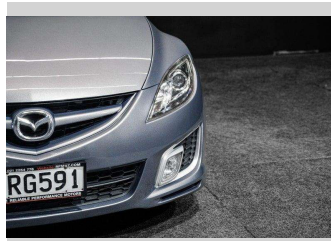
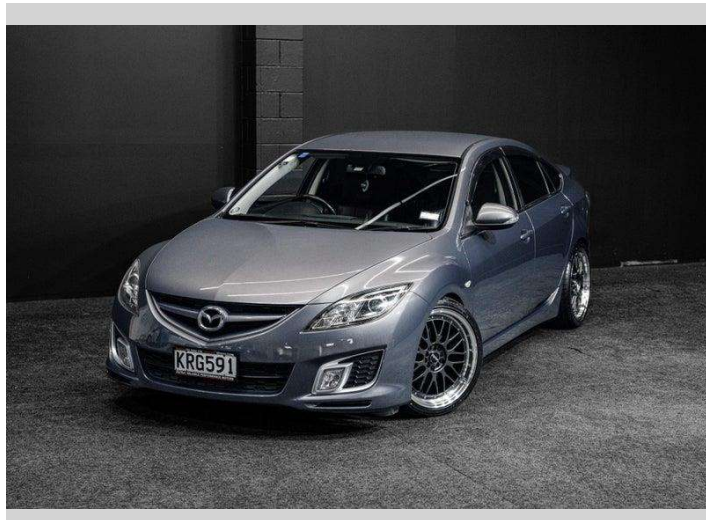


# 2008 Mazda Atenza 25 | L Package



**Purchase Price** **\$14,995**  
Includes GST, Registration & Licensing

Finance may be available on this vehicle. Ask one of our friendly staff for more information.



Gain peace of mind with Mechanical Breakdown Insurance. **Ask us how.**



**Top features**

- » Towbar

Body Style  
**Sedan**

Odometer  
**101,000 km**

Engine  
**2480 cc, Internal Combustion**


Fuel Type  
**Petrol**

Transmission  
**Auto**

Wheels  
-

VIN  
**7AT0C139X15103965**

Interior  
-

Safety  
  
Based on 2025 UCSR rating for 08-11 models

Reg No.  
**KRG591**

Ext Colour  
**Grey**

History  
-

Seats  
-

CO2 Emissions  
**★ ★ ★ ☆ ☆ ☆**  
**215 grams/km**

Energy Economy  
**★ ☆ ☆ ☆ ☆ ☆**  
**Annual fuel cost of \$3,530**  
**9L per 100km**

Cost per year is an estimate based on petrol price of \$2.80 per litre and an average distance of 14000 km. Emissions and Energy Economy figures standardised to 3P WLTP.

**Stock ID: 8710**