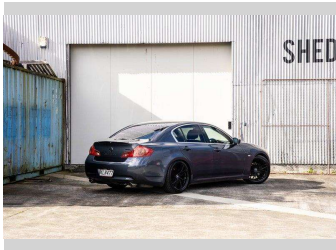
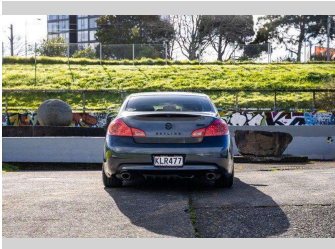
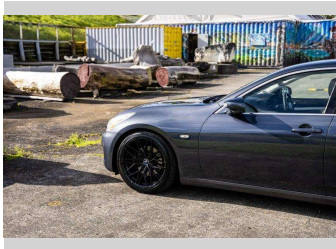


2006 Nissan Skyline 350GT | Type P - 280BHP!



Purchase Price

Includes GST, Registration & Licensing

\$13,995

Finance may be available on this vehicle. Ask one of our friendly staff for more information.



Gain peace of mind with Mechanical Breakdown Insurance. **Ask us how.**



Top features

None Listed

Body Style

Sedan

Odometer

106,000 km

Engine

3490 cc

Fuel Type

Petrol

Transmission

Tiptronic

Wheels

-

VIN

7AT0DH12X17200641

Interior

-

Safety



Based on 2024 VSRR rating

Reg No.

KLR477

Ext Colour

Grey

History

-

Seats

-

CO2 Emissions

★☆☆☆☆

285 grams/km

Energy Economy

★☆☆☆☆

Annual fuel cost of \$4,630

11.8L per 100km

Cost per year is an estimate based on petrol price of \$2.80 per litre and an average distance of 14000 km. Emissions and Energy Economy figures standardised to 3P WLTP.

Stock ID: 7192



RPM - Auckland | Phone 021 2254 776 | Email sales@rpmnz.com
16 Heremai Street, Henderson, Auckland 0612, New Zealand
www.rpmnz.com