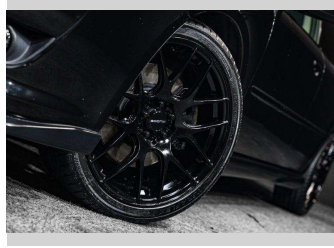
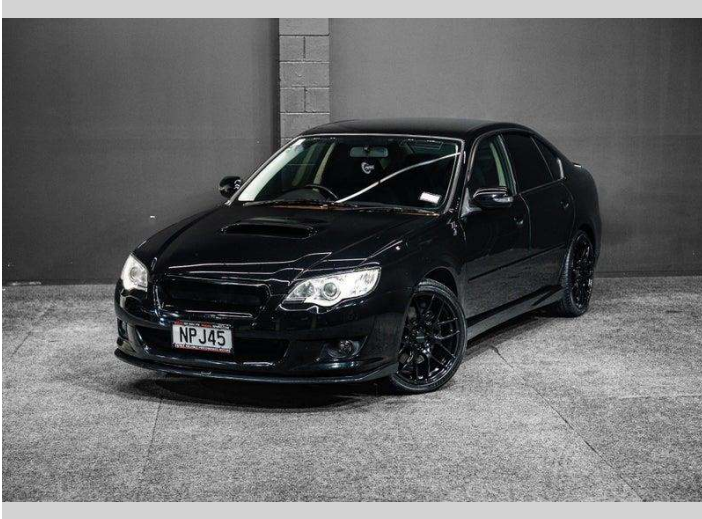



# 2008 Subaru Legacy B4 | GT 2.0L Turbo +




**Purchase Price** **\$10,995**  
Includes GST, Registration & Licensing

Finance may be available on this vehicle. Ask one of our friendly staff for more information.



Gain peace of mind with Mechanical Breakdown Insurance. **Ask us how.**



**Top features**

None Listed

Body Style  
**Sedan**

Odometer  
**168,470 km**

Engine  
**1990 cc, Internal Combustion**

Fuel Type  
**Petrol**


Transmission  
**Auto**

Wheels  
-

VIN  
**7AT0GF0BX21086256**

Interior  
-

Safety



Based on 2025 UCSR rating for 03-09 models

Reg No.  
**NPJ45**

Ext Colour  
**Black**

History  
-

Seats  
-

CO2 Emissions  
**★ ★ ★ ☆ ☆ ☆**  
**213 grams/km**

Energy Economy  
**★ ☆ ☆ ☆ ☆ ☆**  
**Annual fuel cost of \$3,490**  
**8.9L per 100km**

Cost per year is an estimate based on petrol price of \$2.80 per litre and an average distance of 14000 km. Emissions and Energy Economy figures standardised to 3P WLTP.

**Stock ID: 9674**