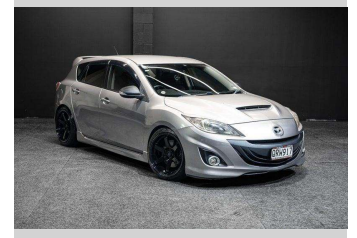
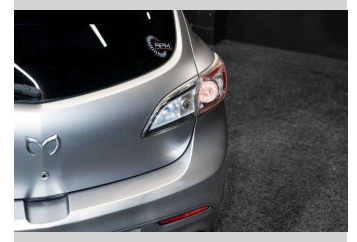
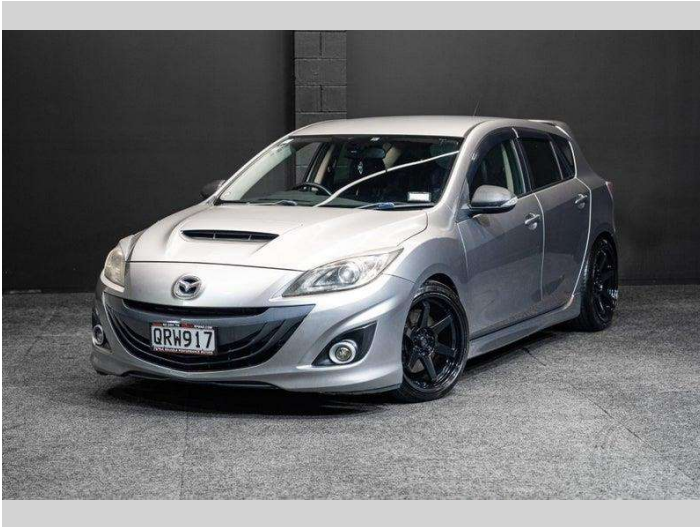


# 2010 Mazda Axela MAZDASPEED Gen 2!



Purchase Price

**\$18,995**

Includes GST, Registration & Licensing

Finance may be available on this vehicle. Ask one of our friendly staff for more information.



Gain peace of mind with Mechanical Breakdown Insurance. **Ask us how.**



## Top features

None Listed

Body Style

**Hatchback**

Odometer

**126,618 km**

Engine

**2260 cc, Internal Combustion**

Fuel Type

**Petrol**

Transmission

**5-Speed Manual**

Wheels

-

VIN

**7AT0C13JX23101203**

Interior

-

Safety



Based on 2025 UCSR rating for 09-13 models

Reg No.

**QRW917**

Ext Colour

**Grey**

History

-

Seats

-

CO2 Emissions

★ ★ ☆ ☆ ☆ ☆ ☆

**257 grams/km**

Energy Economy

★ ☆ ☆ ☆ ☆ ☆ ☆

**Annual fuel cost of \$4,190  
10.7L per 100km**

Cost per year is an estimate based on petrol price of \$2.80 per litre and an average distance of 14000 km. Emissions and Energy Economy figures standardised to 3P WLTP.

**Stock ID: 9673**



RPM - Auckland | Phone 021 2254 776 | Email sales@rpmnz.com  
16 Heremai Street, Henderson, Auckland 0612, New Zealand  
www.rpmnz.com