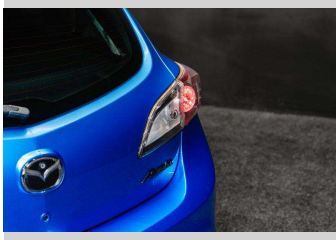


# 2009 Mazda Axela 20S - LOW KMS!



Purchase Price

**\$12,995**

Includes GST, Registration & Licensing

Finance may be available on this vehicle. Ask one of our friendly staff for more information.



Gain peace of mind with Mechanical Breakdown Insurance. **Ask us how.**



## Top features

None Listed

Body Style

**Hatchback**

Odometer

**59,000 km**

Engine

**1990 cc**

Fuel Type

**Petrol**

Transmission

**Auto**

Wheels

-

VIN

**7AT0C13JX19101571**

Interior

-

Safety



Based on 2024 UCSR rating for 09-13 models

Reg No.

**MPJ285**

Ext Colour

**Blue**

History

-

Seats

-

CO2 Emissions

★★★★★☆☆

**183 grams/km**

Energy Economy

★★★☆☆☆☆

**Annual fuel cost of \$2,980**

**7.6L per 100km**

Cost per year is an estimate based on petrol price of \$2.80 per litre and an average distance of 14000 km. Emissions and Energy Economy figures standardised to 3P WLTP.

**Stock ID: 7318**