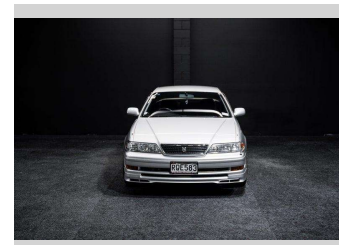


1999 Toyota MARK II JZX100 | Tourer V - 1JZGTE!



Purchase Price

\$35,995

Includes GST, Registration & Licensing

Finance may be available on this vehicle. Ask one of our friendly staff for more information.



Gain peace of mind with Mechanical Breakdown Insurance. **Ask us how.**



Top features

None Listed

Body Style

Sedan

Odometer

115,000 km

Engine

2491 cc, Internal Combustion

Fuel Type

Petrol

Transmission

Auto

Wheels

-

VIN

7AT0H60LX22084796

Interior

-

Safety



Based on 2025 VSRR rating

Reg No.

RQE583

Ext Colour

Silver

History

-

Seats

-

CO2 Emissions

★☆☆☆☆

274 grams/km

Energy Economy

★☆☆☆☆

Annual fuel cost of \$4,470

11.4L per 100km

Cost per year is an estimate based on petrol price of \$2.80 per litre and an average distance of 14000 km. Emissions and Energy Economy figures standardised to 3P WLTP.

Stock ID: 8576



RPM - Auckland | Phone 021 2254 776 | Email sales@rpmnz.com
16 Heremai Street, Henderson, Auckland 0612, New Zealand
www.rpmnz.com