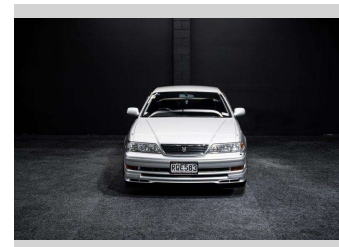
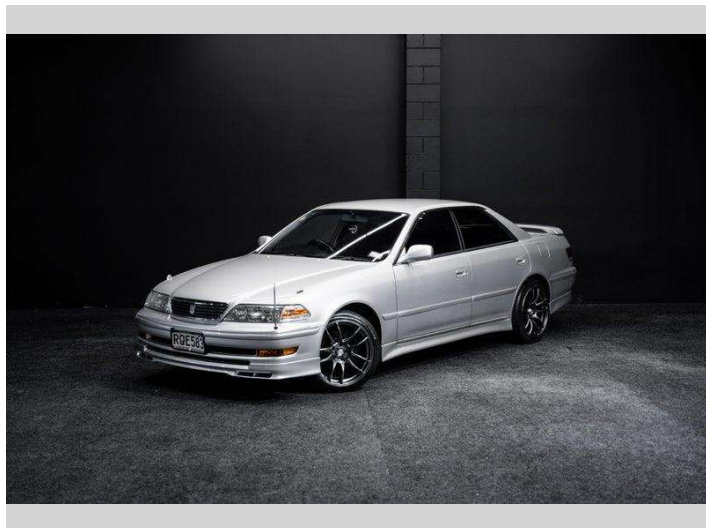


# 1999 Toyota MARK II JZX100 | Tourer V - 1JZGTE!



Purchase Price

**\$35,995**

Includes GST, Registration & Licensing

Finance may be available on this vehicle. Ask one of our friendly staff for more information.



Gain peace of mind with Mechanical Breakdown Insurance. **Ask us how.**



## Top features

None Listed

Body Style

**Sedan**

Odometer

**115,000 km**

Engine

**2491 cc**

Fuel Type

**Petrol**

Transmission

**Auto**

Wheels

-

VIN

**7AT0H60LX22084796**

Interior

-

Safety



Based on 2025 VSRR rating

Reg No.

**RQE583**

Ext Colour

**Silver**

History

-

Seats

-

CO2 Emissions

★☆☆☆☆

**274 grams/km**

Energy Economy

★☆☆☆☆

**Annual fuel cost of \$4,470**

**11.4L per 100km**

Cost per year is an estimate based on petrol price of \$2.80 per litre and an average distance of 14000 km. Emissions and Energy Economy figures standardised to 3P WLTP.

**Stock ID: 8576**



RPM - Auckland | Phone 021 2254 776 | Email sales@rpmnz.com  
16 Heremai Street, Henderson, Auckland 0612, New Zealand  
www.rpmnz.com