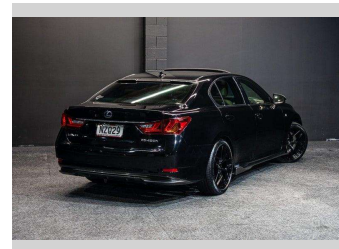
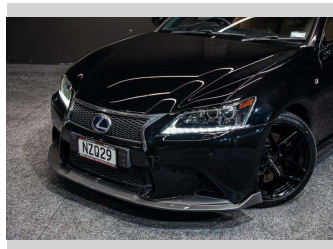


# 2012 Lexus GS 450h Hybrid 338BHP - Version L



**Purchase Price** **\$24,995**  
Includes GST, Registration & Licensing

Finance may be available on this vehicle. Ask one of our friendly staff for more information.



Gain peace of mind with Mechanical Breakdown Insurance. **Ask us how.**



**Top features**

None Listed

Body Style  
**Sedan**

Odometer  
**96,007 km**

Engine  
**3456 cc, Hybrid**


Fuel Type  
**Electric**

Transmission  
**Auto**

Wheels  
-

VIN  
**JTHBS1BL605000179**

Interior  
-

Safety  
  
Based on 2025 VSRR rating

Reg No.  
**NZQ29**

Ext Colour  
**Black**

History  
-

Seats  
-

CO2 Emissions  
**★ ★ ★ ★ ☆ ☆**  
**207 grams/km**

Energy Economy  
**★ ★ ☆ ☆ ☆ ☆**  
**Annual fuel cost of \$3,450**  
**8.8L per 100km**

Cost per year is an estimate based on petrol price of \$2.80 per litre and an average distance of 14000 km. Emissions and Energy Economy figures standardised to 3P WLTP.

**Stock ID: 9331**