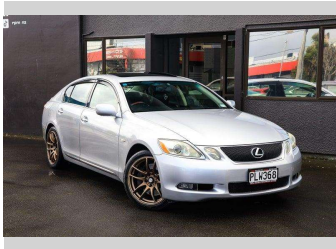


2005 Lexus GS 430 | 4.3L V8 279BHP w/ Sunroof!



Purchase Price

\$13,995

Includes GST, Registration & Licensing

Finance may be available on this vehicle. Ask one of our friendly staff for more information.



Gain peace of mind with Mechanical Breakdown Insurance. **Ask us how.**



Top features

None Listed

Body Style

Sedan

Odometer

168,000 km

Engine

4290 cc

Fuel Type

Petrol

Transmission

Auto

Wheels

-

VIN

7AT0B00DX18010618

Interior

-

Safety



Based on 2024 VSRR rating

Reg No.

PLW368

Ext Colour

Silver

History

-

Seats

-

CO2 Emissions

★☆☆☆☆

287 grams/km

Energy Economy

★☆☆☆☆

Annual fuel cost of \$4,660

11.9L per 100km

Cost per year is an estimate based on petrol price of \$2.80 per litre and an average distance of 14000 km. Emissions and Energy Economy figures standardised to 3P WLTP.

Stock ID: 3007283