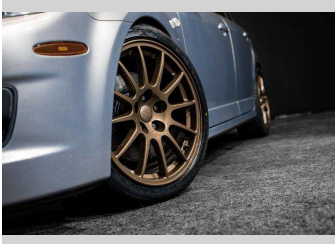


# 2006 Mazda Atenza MAZDASPEED AWD



### Purchase Price

Includes GST, Registration & Licensing

**\$18,995**

Finance may be available on this vehicle. Ask one of our friendly staff for more information.



Gain peace of mind with Mechanical Breakdown Insurance. **Ask us how.**



### Top features

» 4WD/4x4

### Body Style

**Sedan**

### Odometer

**136,000 km**

### Engine

**2260 cc**

### Fuel Type

**Petrol**

### Transmission

**5-Speed Manual, 4WD**

### Wheels

-

### VIN

**7AT0C139X15435133**

### Interior

-

### Safety



Based on 2025 UCSR rating for 02-07 models

### Reg No.

**JTN424**

### Ext Colour

**Silver**

### History

-

### Seats

-

### CO2 Emissions

★ ★ ☆ ☆ ☆ ☆

**244 grams/km**

### Energy Economy

★ ☆ ☆ ☆ ☆ ☆

**Annual fuel cost of \$4,000  
10.2L per 100km**

Cost per year is an estimate based on petrol price of \$2.80 per litre and an average distance of 14000 km. Emissions and Energy Economy figures standardised to 3P WLTP.

**Stock ID: 8185**



RPM - Auckland | Phone 021 2254 776 | Email sales@rpmnz.com  
16 Heremai Street, Henderson, Auckland 0612, New Zealand  
www.rpmnz.com