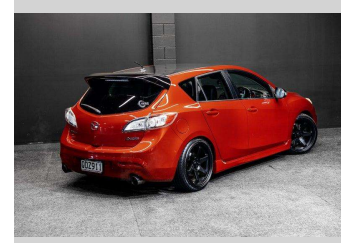
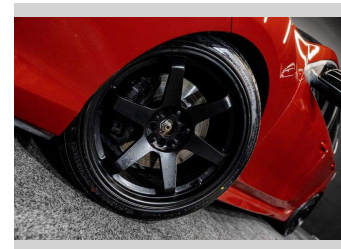
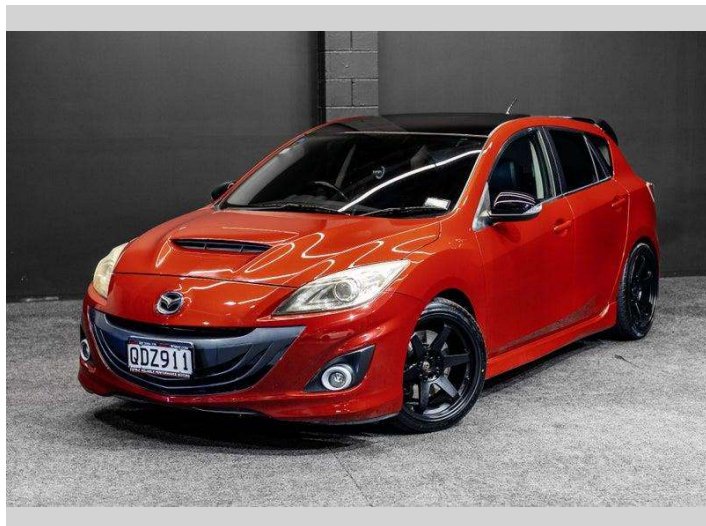


2009 Mazda Axela 2.3L 6SPD MAZDASPEED



Purchase Price **\$17,995**
Includes GST, Registration & Licensing

Finance may be available on this vehicle. Ask one of our friendly staff for more information.



Gain peace of mind with Mechanical Breakdown Insurance. **Ask us how.**



Top features

None Listed

Body Style
Hatchback

Odometer
143,000 km

Engine
2260 cc, Internal Combustion


Fuel Type
Petrol

Transmission
5-Speed Manual

Wheels
-

VIN
7AT0C13JX19100117

Interior
-

Safety

Based on 2025 UCSR rating for 09-13 models

Reg No.
QDZ911

Ext Colour
Red

History
-

Seats
-

CO2 Emissions
★ ★ ☆ ☆ ☆ ☆
257 grams/km

Energy Economy
★ ☆ ☆ ☆ ☆ ☆
Annual fuel cost of \$4,190
10.7L per 100km

Cost per year is an estimate based on petrol price of \$2.80 per litre and an average distance of 14000 km. Emissions and Energy Economy figures standardised to 3P WLTP.

Stock ID: 9036