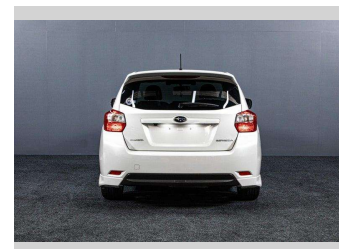
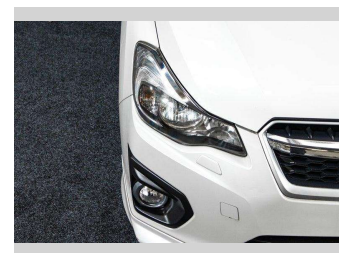
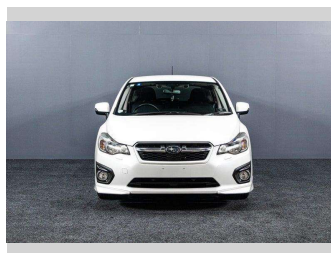


# 2014 Subaru Impreza 4WD 2.0I-S EYESIGHT!



**Purchase Price** **\$14,995**  
Includes GST, Registration & Licensing

Finance may be available on this vehicle. Ask one of our friendly staff for more information.



Gain peace of mind with Mechanical Breakdown Insurance. **Ask us how.**



**Top features**

- » 4WD/4x4

Body Style  
**Hatchback**

Odometer  
**106,000 km**

Engine  
**1995 cc, Internal Combustion**


Fuel Type  
**Petrol**

Transmission  
**Auto, 4WD**

Wheels  
-

VIN  
**7AT0GF09X26065421**

Interior  
-

Safety  
  
Based on 2025 UCSR rating for 12-16 models

Reg No.  
-

Ext Colour  
**White**

History  
-

Seats  
-

CO2 Emissions  
**★★★★☆**  
**163 grams/km**

Energy Economy  
**★★★☆☆**  
**Annual fuel cost of \$2,740**  
**7L per 100km**

Cost per year is an estimate based on petrol price of \$2.80 per litre and an average distance of 14000 km. Emissions and Energy Economy figures standardised to 3P WLTP.

**Stock ID: 3008957**