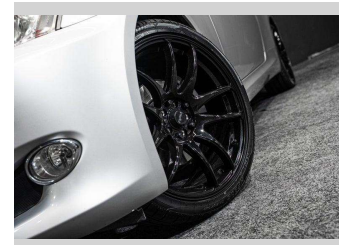
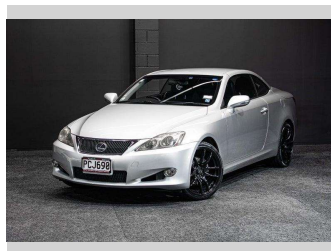


2009 Lexus IS 250 Coupe Convertible!




Purchase Price **\$19,995**
Includes GST, Registration & Licensing

Finance may be available on this vehicle. Ask one of our friendly staff for more information.



Gain peace of mind with Mechanical Breakdown Insurance. **Ask us how.**



Top features

None Listed

Body Style
Convertible

Odometer
153,000 km

Engine
2490 cc, Internal Combustion

Fuel Type
Petrol


Transmission
Auto

Wheels
-

VIN
7AT0B00EX20507138

Interior
-

Safety



Based on 2025 UCSR rating for 05-13 models

Reg No.
PCJ690

Ext Colour
Silver

History
-

Seats
-

CO2 Emissions
★ ★ ☆ ☆ ☆ ☆
244 grams/km

Energy Economy
★ ☆ ☆ ☆ ☆ ☆
Annual fuel cost of \$3,960
10.1L per 100km

Cost per year is an estimate based on petrol price of \$2.80 per litre and an average distance of 14000 km. Emissions and Energy Economy figures standardised to 3P WLTP.

Stock ID: 8495