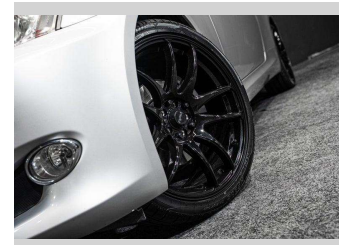
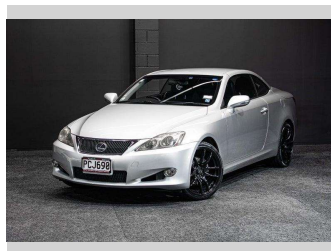


# 2009 Lexus IS 250 Coupe Convertible!



**Purchase Price** **\$19,995**  
Includes GST, Registration & Licensing

Finance may be available on this vehicle. Ask one of our friendly staff for more information.



Gain peace of mind with Mechanical Breakdown Insurance. **Ask us how.**



**Top features**

None Listed

Body Style  
**Convertible**

Odometer  
**153,000 km**

Engine  
**2490 cc, Internal Combustion**

Fuel Type  
**Petrol**


Transmission  
**Auto**

Wheels  
-

VIN  
**7AT0B00EX20507138**

Interior  
-

Safety



Based on 2025 UCSR rating for 05-13 models

Reg No.  
**PCJ690**

Ext Colour  
**Silver**

History  
-

Seats  
-

CO2 Emissions  
**★ ★ ☆ ☆ ☆ ☆**  
**244 grams/km**

Energy Economy  
**★ ☆ ☆ ☆ ☆ ☆**  
**Annual fuel cost of \$3,960**  
**10.1L per 100km**

Cost per year is an estimate based on petrol price of \$2.80 per litre and an average distance of 14000 km. Emissions and Energy Economy figures standardised to 3P WLTP.

**Stock ID: 8495**