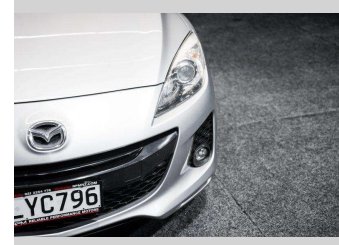
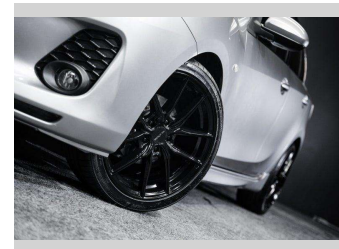
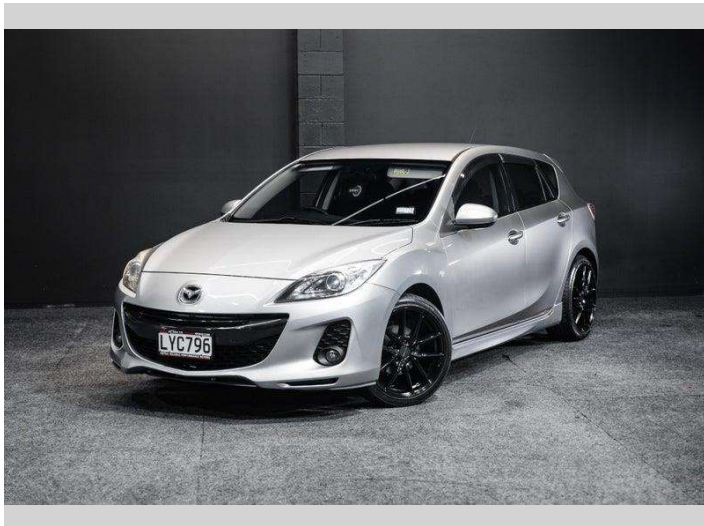


2012 Mazda Axela | 1.5L - Fuel Saver



Purchase Price **\$11,995**
Includes GST, Registration & Licensing

Finance may be available on this vehicle. Ask one of our friendly staff for more information.



Gain peace of mind with Mechanical Breakdown Insurance. **Ask us how.**



Top features

None Listed

Body Style
Hatchback

Odometer
133,940 km

Engine
1490 cc, Internal Combustion


Fuel Type
Petrol

Transmission
Auto

Wheels
-

VIN
7AT0C13JX19201054

Interior
-

Safety

Based on 2025 UCSR rating for 09-13 models

Reg No.
LYC796

Ext Colour
Silver

History
-

Seats
-

CO2 Emissions
★★★★☆
161 grams/km

Energy Economy
★★★★☆☆
Annual fuel cost of \$2,820
7.2L per 100km

Cost per year is an estimate based on petrol price of \$2.80 per litre and an average distance of 14000 km. Emissions and Energy Economy figures standardised to 3P WLTP.

Stock ID: 9536