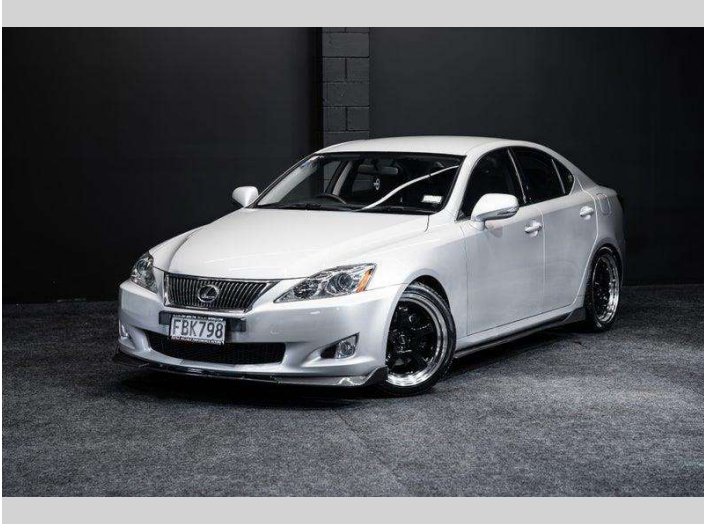


2009 Lexus IS 250 Version S - Full Aero!



Purchase Price

Includes GST, Registration & Licensing

\$14,995

Finance may be available on this vehicle. Ask one of our friendly staff for more information.



Gain peace of mind with Mechanical Breakdown Insurance. **Ask us how.**



Top features

None Listed

Body Style

Sedan

Odometer

109,000 km

Engine

2500 cc

Fuel Type

Petrol

Transmission

Auto

Wheels

-

VIN

JTHBK262105108054

Interior

-

Safety



Based on 2025 UCSR rating for 05-13 models

Reg No.

FBK798

Ext Colour

Silver

History

-

Seats

-

CO2 Emissions

★ ★ ☆ ☆ ☆ ☆

243 grams/km

Energy Economy

★ ☆ ☆ ☆ ☆ ☆

Annual fuel cost of \$3,960
10.1L per 100km

Cost per year is an estimate based on petrol price of \$2.80 per litre and an average distance of 14000 km. Emissions and Energy Economy figures standardised to 3P WLTP.

Stock ID: 7990



RPM - Auckland | Phone 021 2254 776 | Email sales@rpmnz.com
16 Heremai Street, Henderson, Auckland 0612, New Zealand
www.rpmnz.com